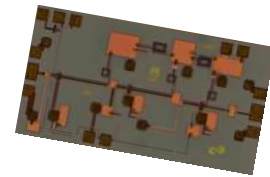


CMD162

26-34 GHz Low Noise Amplifier



Features

- ▶ Ultra low noise performance
- ▶ Low current consumption
- ▶ Small die size

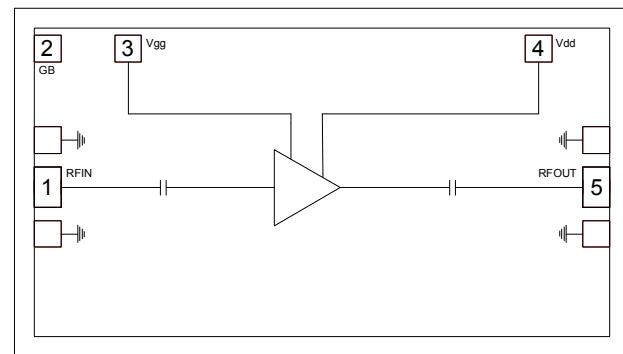
Applications

- ▶ Phased-array radar
- ▶ Point-to-point radios
- ▶ EW subsystems

Description

The CMD162 is a highly efficient GaAs MMIC low noise amplifier ideally suited for EW and communications systems where small size and low power consumption are needed. The device is optimized for 30 GHz and delivers greater than 22 dB of gain with a corresponding output 1 dB compression point of +7 dBm and noise figure of 1.7 dB. The CMD162 is a 50 ohm matched design which eliminates the need for external DC blocks and RF port matching. The CMD162 offers full passivation for increased reliability and moisture protection. This amplifier is the perfect alternative to higher cost hybrid amplifiers.

Functional Block Diagram



Electrical Performance - $V_{dd} = 2.0\text{ V}$, $V_{gg} = 2.0\text{ V}$, $T_A = 25\text{ }^\circ\text{C}$, $F=30\text{ GHz}$

Parameter	Min	Typ	Max	Units
Frequency Range	26 - 34			GHz
Gain		22		dB
Noise Figure		1.7		dB
Input Return Loss		18		dB
Output Return Loss		20		dB
Output P1dB		7		dBm
Supply Current		25		mA

ver 1.0 1011



CMD162

26-34 GHz Low Noise Amplifier

Specifications

Absolute Maximum Ratings

Parameter	Rating
Drain Voltage, V _{dd}	4.5 V
Gate Voltage, V _{gg}	3.0 V
RF Input Power	+10 dBm
Channel Temperature, T _{ch}	150 °C
Power Dissipation, P _{diss}	360 mW
Thermal Resistance	180 °C/W
Operating Temperature	-55 to 85 °C
Storage Temperature	-55 to 150 °C

Operation of this device outside the maximum ratings may cause permanent damage.

Recommended Operating Conditions

Parameter	Min	Typ	Max	Units
V _{dd}	1.0	2.0	4.0	V
I _{dd}		25		mA
V _{gg}	0	2.0	3.0	V

Electrical performance is measured at specific test conditions. Electrical specifications are not guaranteed over all recommended operating conditions.

Electrical Specifications, V_{dd} = 2.0 V, V_{gg} = 2.0 V, T_A = 25 °C

Parameter	Min	Typ	Max	Min	Typ	Max	Units
Frequency Range	26 - 30			30 - 34			GHz
Gain	20	23	27	18	21	25	dB
Noise Figure		1.7	2.1		1.7	2.0	dB
Input Return Loss		20			15		dB
Output Return Loss		10			12		dB
Output P _{1dB}		5			8		dBm
Supply Current	17	25	33	17	25	33	mA
Gain Temperature Coefficient		0.02			0.02		dB/°C
Noise Figure Temperature Coefficient		0.009			0.009		dB/°C

ver 1.0 1011

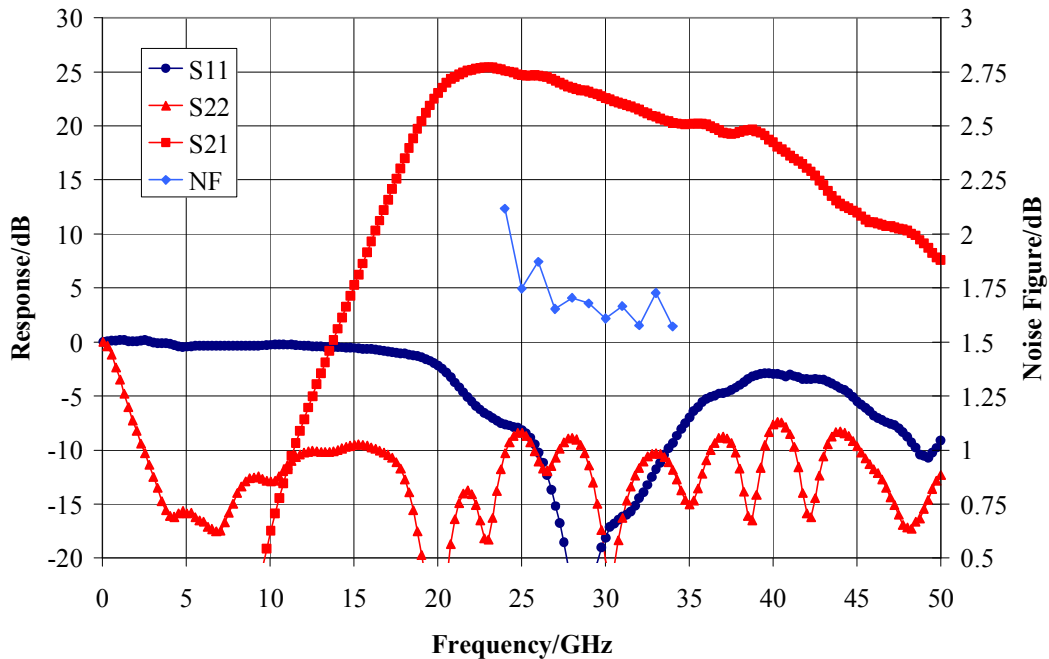


CMD162

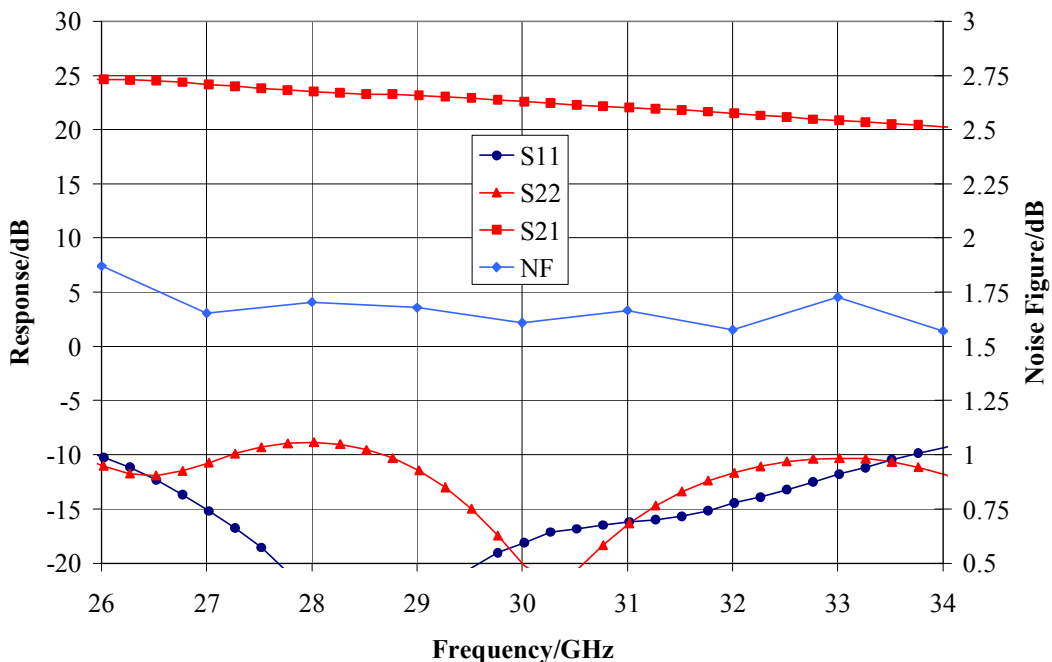
26-34 GHz Low Noise Amplifier

Typical Performance

Broadband Performance, $V_{dd} = 2.0 \text{ V}$, $V_{gg} = 2.0 \text{ V}$, $I_{dd} = 25\text{mA}$, $T_A = 25 \text{ }^\circ\text{C}$



Narrow-band Performance, $V_{dd} = 2.0 \text{ V}$, $V_{gg} = 2.0 \text{ V}$, $I_{dd} = 25 \text{ mA}$, $T_A = 25 \text{ }^\circ\text{C}$



ver 1.0 1011

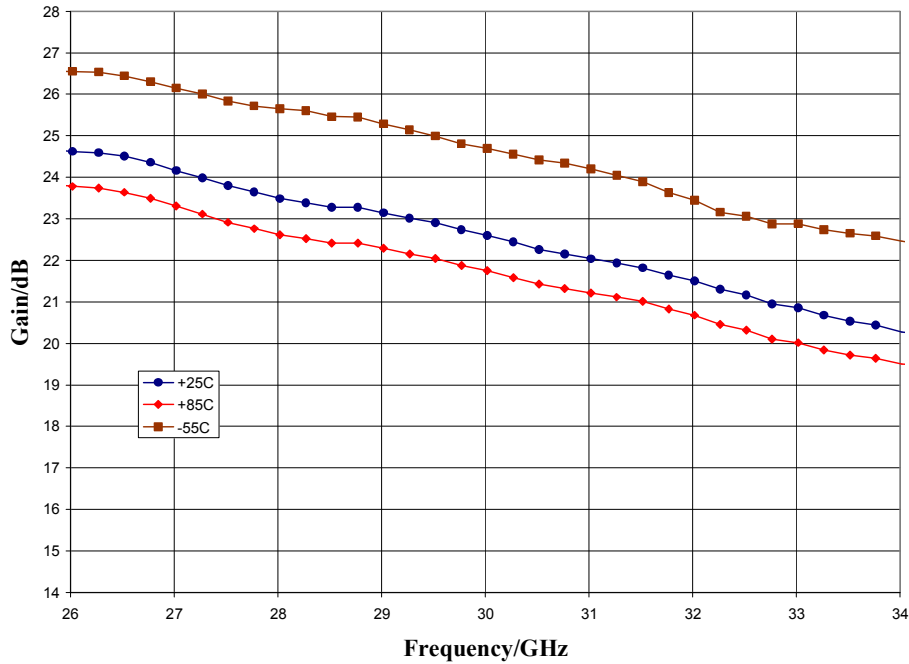


CMD162

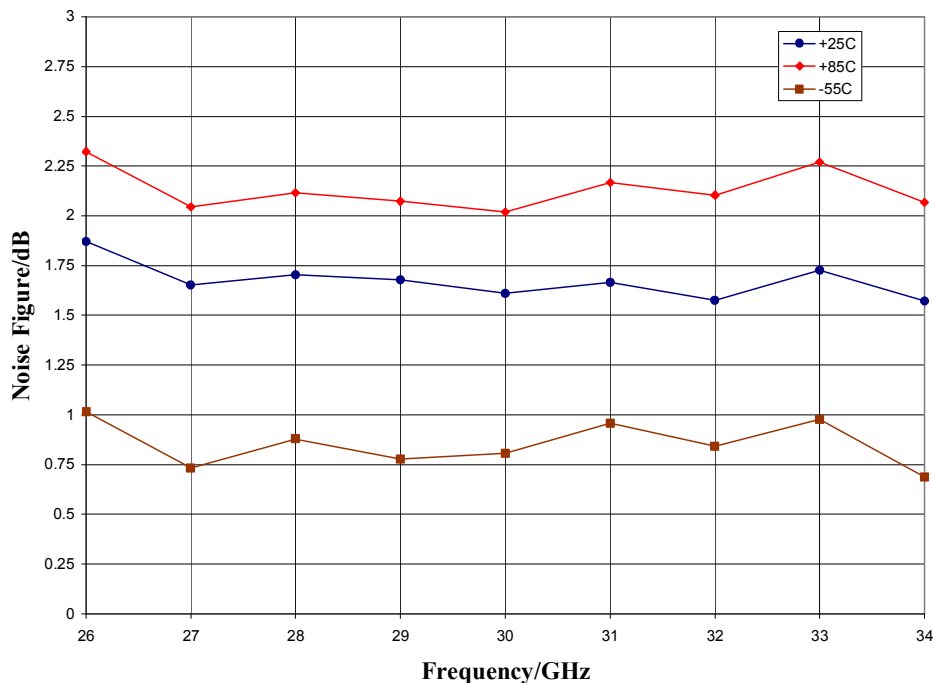
26-34 GHz Low Noise Amplifier

Typical Performance

Gain vs. Temperature, $V_{dd} = 2.0\text{ V}$, $V_{gg} = 2.0\text{ V}$



Noise Figure vs. Temperature, $V_{dd} = 2.0\text{ V}$, $V_{gg} = 2.0\text{ V}$



ver 1.0 1011

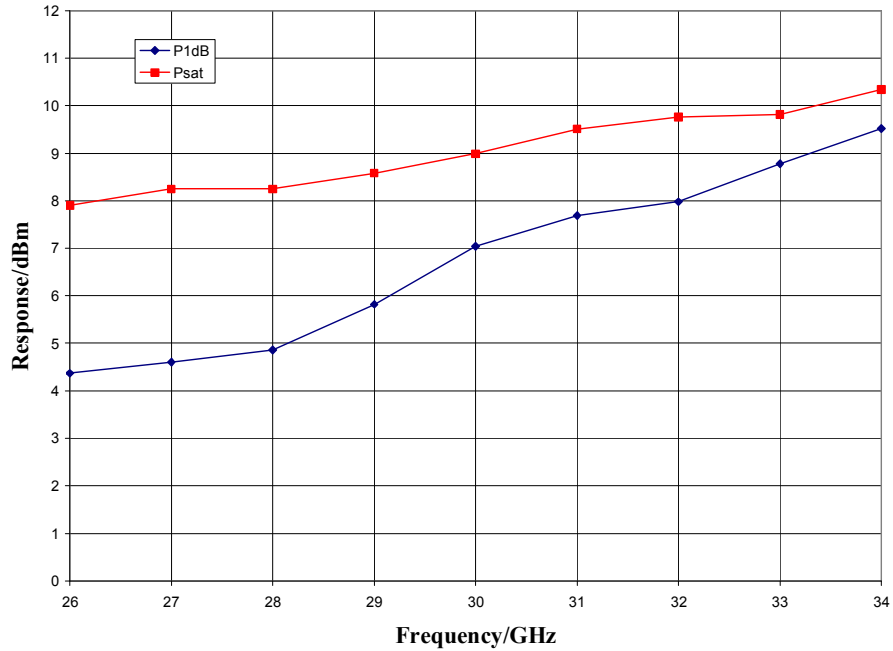


CMD162

26-34 GHz Low Noise Amplifier

Typical Performance

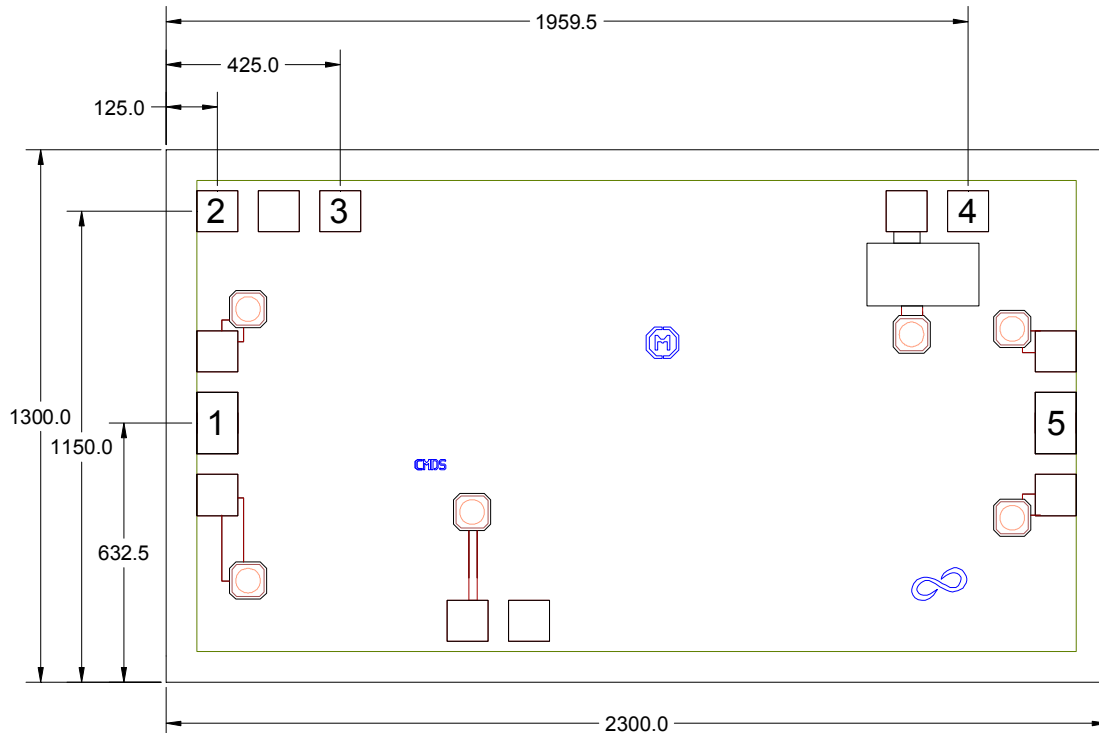
Output Power, $V_{dd} = 2.0\text{ V}$, $V_{gg} = 2.0\text{ V}$, $I_{dd} = 25\text{ mA}$, $T_A = 25\text{ }^\circ\text{C}$



ver 1.0 1011

Mechanical Information

Die Outline (all dimensions in microns)

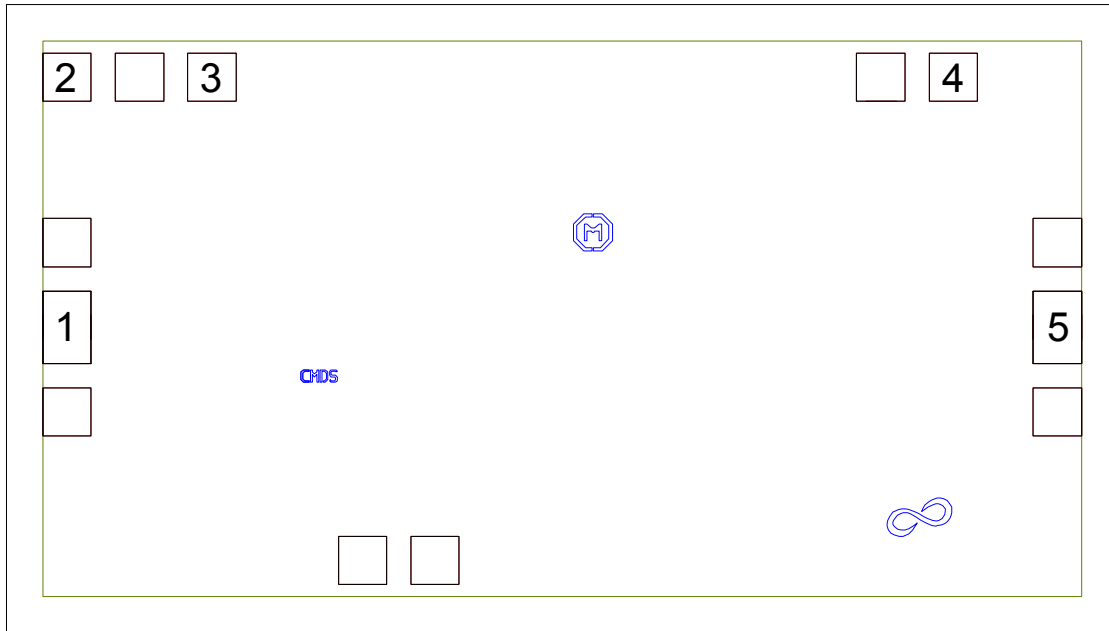


Notes:


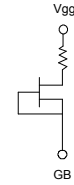
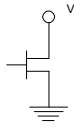


1. No connection required for unlabeled pads
2. Backside is RF and DC ground
3. Backside and bond pad metal: Gold
4. Die is 100 microns thick
5. DC bond pads are 100 microns square

Pad Description

Pad Diagram



Functional Description

Pad	Function	Description	Schematic
1	RF in	DC blocked and 50 ohm matched	
2	GB	Connect to DC ground	
3	Vgg	Power supply voltage Decoupling and bypass caps required	
4	Vdd	Power supply voltage Decoupling and bypass caps required	
5	RF out	DC blocked and 50 ohm matched	
Backside	Ground	Connect to RF / DC ground	

ver 1.0 1011



CMD162

26-34 GHz Low Noise Amplifier

Applications Information

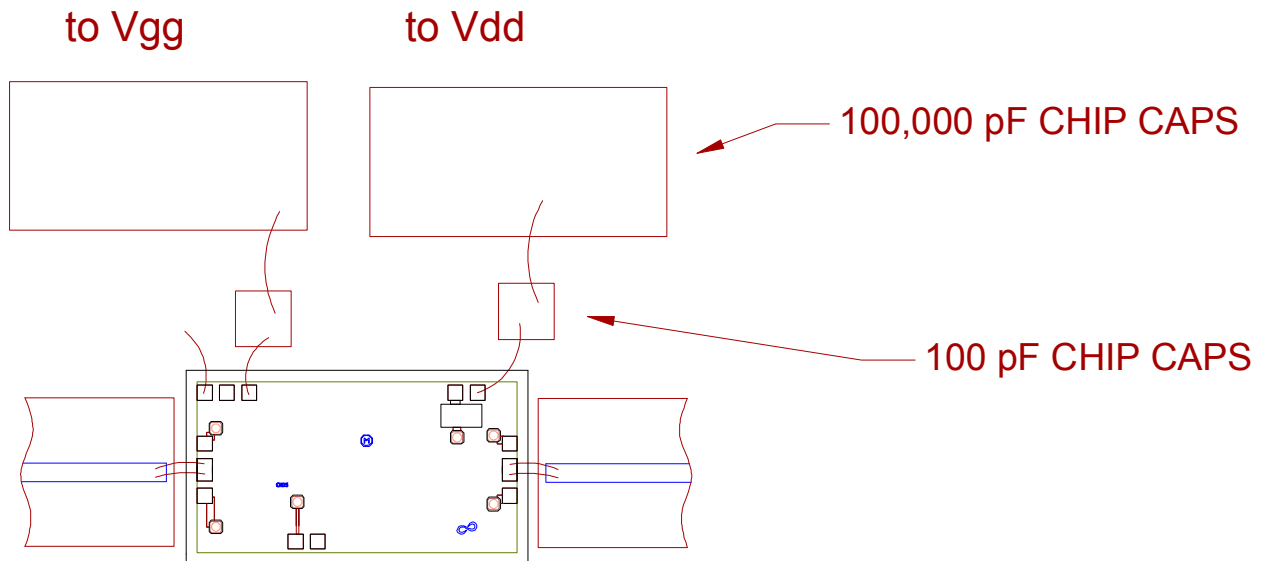
Assembly Guidelines

The backside of the CMD162 is RF ground. For microstrip applications, the die should be electrically and thermally epoxied to a sound heat sink. Standard assembly procedures should be followed for high frequency devices. The top surface of the semiconductor should be made planar to the adjacent RF transmission lines, and the RF decoupling capacitors placed in close proximity to the DC connections on chip.

RF connections should be made as short as possible to reduce the inductive effect of the bond wire. Use of a 0.8 mil thermosonic wedge bonding is highly recommended as the loop height will be minimized. The RF input and output require a double bond wire as shown.

The semiconductor is 100 um thick and should be handled by the sides of the die or with a custom collet. Do not make contact directly with the die surface as this will damage the monolithic circuitry. Handle with care.

Assembly Diagram



ver 1.0 1011



CMD162

26-34 GHz Low Noise Amplifier

Applications Information

Biasing and Operation

The CMD162 is biased with a positive drain supply and positive gate supply. Performance is optimized when the drain voltage is set to +2.0 V, though it may be set to a minimum of +1.0 V and a maximum of +4.0 V. The recommended gate voltage is +2.0 V.

Turn ON procedure:

1. Apply drain voltage V_{dd} and set to +2 V
2. Apply gate voltage V_{gg} and set to +2 V

Turn OFF procedure:

1. Turn off gate voltage V_{gg}
2. Turn off drain voltage V_{dd}

RF power can be applied at any time.

ver 1.0 1011